

## Versatile & Hybrid

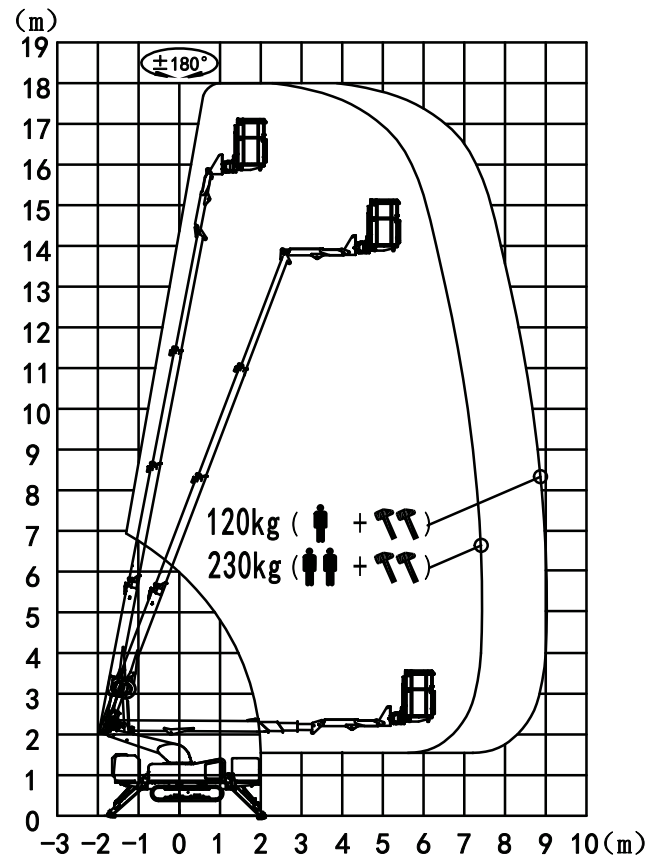
GMH crawler spider lifts boast exceptional off-road capabilities and industry-leading gradability, equipped with dual power. The safe working load capacity is 230kg, and the all-terrain tracks make these lifts perfect for any job. The fuel-efficient combustion engine and silent electric operation ensure that GMH Lifts are suitable for both indoor and outdoor use, while the compact size makes transportation a breeze.

Crawler Spider Boom Lift  
GMH-SZ18A

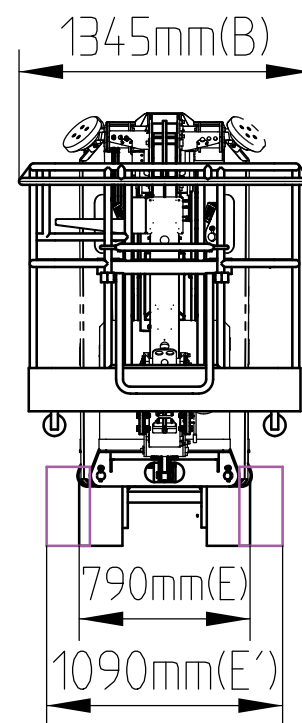
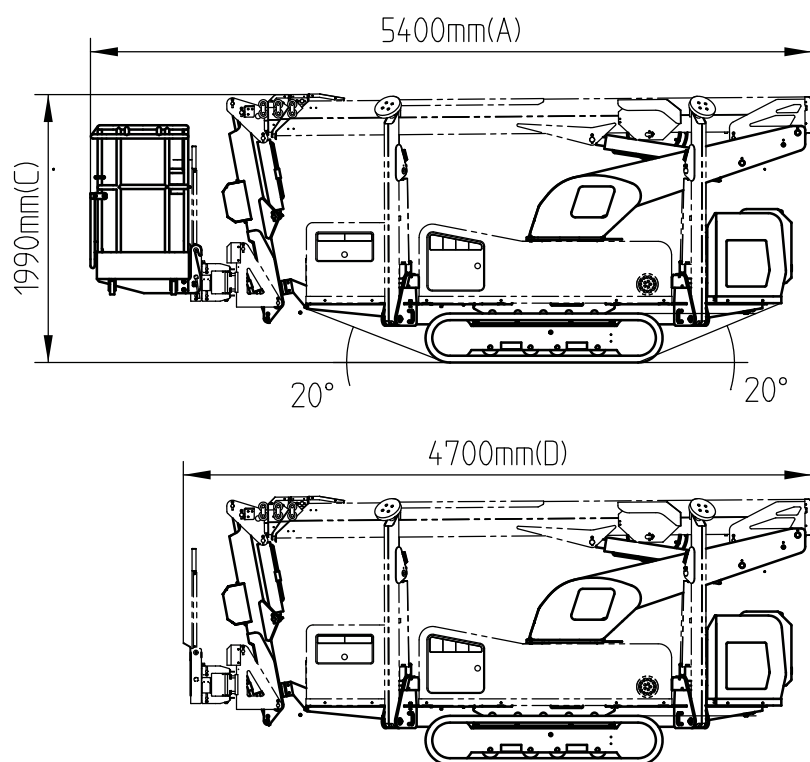


# Technical Parameters

Parameters	SZ18A
Working height	18m
Wind Test	12.5m/s
Outreach	7.4m(230kg) 9m(120kg)
Boom tilting	0 to 80°
Jib tilting	+80°/-90°
Basket rotation	+90°/-90°
Turret rotation	360°(Discontinuous)
Max lift capacity	230 kg (2 persons)
Basket Size	1.25 x 0.68 x 1.1m
Gradeability	20°(36%)
Diving speed	0-1.5 km/h
Weight	2800kg
Engine Disel	KUBOTA
Fuel Tank Capacity	15L
Hydraulic Oil Tank Capacity	35L
Electric Power	220V single phase electric motor
Working Temperature	-20°~40° celsius



## Basic parameters



Specifications		SZ18A
Track length		1.75m
Outrigger working area	Length <sup>F</sup>	3.70m
	Width <sup>G</sup>	3.05m
With platform	Height <sup>C</sup>	1.99m
	Length <sup>A</sup>	5.40m
	Width <sup>B</sup>	1.345m
Without platform	Height <sup>C</sup>	1.99m
	Length <sup>D</sup>	4.70m
	Width <sup>E</sup>	0.79m
Ground clearance		0.13m

