

ENGINE POWERED ROUGH TERRAIN SCISSOR LIFTS

1323RD (4389RD) / 1623RD (5389RD)

Compliant with CE/ANSI/CSA/AS/EAC standards

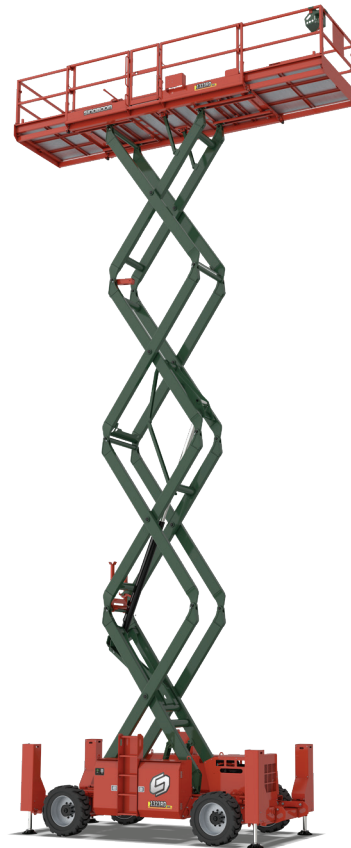
PRODUCT HIGHLIGHTS

Excellent performance

- Better drive and working performance on rough terrains based on improved chassis and active oscillating function
- Smoother dual slide-out extension platform is available for locking at any positions
- Optimum working efficiency with one button for auto levelling outriggers

Easy maintenance

- It provides better access to reach all components installed on two sides of chassis
- Slide-out engine tray makes engine completely accessible
- Quick fault inquiry thanks to on-board diagnostic system



Standard Features

4 WD × 2 WS	Forklift pockets	Lifting and tie-down points
Document box	Electrophoretic painting	Proportional controls
Emergency stop	Dual slide-out extension platform	Emergency lowering system
Foldable guardrail	Horn & buzzer	Auto braking system
Tilt alarm	Motion alarm	Load sensing system
Drivable at full height (1323RD only)	Flashing beacon	Fault diagnosis system
Active oscillating function	Auto-levelling hydraulic outriggers	Foam-filled tires
Telematics-ready connector		

Options & Accessories

AC power to platform	Foam-filled non-marking tires	Solid tires
Solid non-marking tires	7.4m platform	Pipe cradle
Generator	Cold weather package	

SINOBOOM™

PARTNERS IN ACCESS™

SINOBOOM.COM | SALES@SINOBOOM.COM

NO.128 EAST JINZHOU AV., NINGXIANG HI-TECH INDUSTRY PARK, CHANGSHA, HUNAN, CHINA, 410600

ENGINE POWERED ROUGH TERRAIN SCISSOR LIFTS

1323RD (4389RD) / 1623RD (5389RD)

Compliant with CE/ANSI/CSA/AS/EAC standards

Model	1323RD (4389RD)	1623RD (5389RD)
Dimensions		
Max.Working Height	15.1 m (49'6.5")	18.2 m (59'8.5")
A Max.Platform Height	13.1 m (42'11.7")	16.2 m (53'1.8")
B Platform Extension (Front/Back)	1.5 m/1.2 m (4'11.1"/3'11.2")	1.5 m/1.2 m (4'11.1"/3'11.2")
C Overall Length	4.88 m (16')	4.88 m (16')
D Overall Width	2.31 m (7'7")	2.31 m (7'7")
E Height-Stowed (Rails Folded)	2.20 m (7'2.6")	2.42 m (7'11.3")
E Height-Stowed (Rails Unfolded)	2.96 m (9'8.5")	3.18 m (10'5.2")
F Wheelbase	2.85 m (9'4")	2.85 m (9'4")
Ground Clearance	0.36 m (1'2.2")	0.36 m (1'2.2")
Platform Size (L×W×H) (6.5m Platform)	3.96 m×1.82 m×1.1 m (13'×6'×3'7")	3.96 m×1.82 m×1.1 m (13'×6'×3'7")
Platform Size (L×W×H) (7.4m Platform)	4.84 m×1.82 m×1.1 m (15'10.6"×6'×3'7")	4.84 m×1.82 m×1.1 m (15'10.6"×6'×3'7")
Performance		
Platform Capacity	680 kg (1,499 lbs)	680 kg (1,499 lbs)
Capacity on Platform Extension	227 kg (500 lbs)	227 kg (500 lbs)
Max.Platform Occupants (Indoor/Outdoor)	7 Persons/7 Persons	4 Persons/4 Persons
Drive Speed (Stowed)	6.1 km/h (3.8 mph) Yanmar engine 5.0 km/h (3.1 mph) Kubota engine	6.1 km/h (3.8 mph) Yanmar engine 5.0 km/h (3.1 mph) Kubota engine
Drive Speed (Raised)	1.1 km/h (0.7 mph)	1.1 km/h (0.7 mph)
Lift Time (Unloaded)	50 s ~ 60 s	70 s ~ 90 s
Lower Time (Unloaded)	34 s ~ 44 s	45 s ~ 55 s
Gradeability	40%	40%
Tilt Rating (Front-to-Back)	3°	3°
Tilt Rating (Side-to-Side)	2°	2°
Max.Outrigger Levelling (Front-to-Back)	7°	7°
Max.Outrigger Levelling (Side-to-Side)	12°	12°
Turning Radius (Inside/Outside)	2.2 m/5.3 m (7'2.6"/17'4.7")	2.2 m/5.3 m (7'2.6"/17'4.7")
Tire Spec/Type	315/55D20/Foam-Filled	315/55D20/Foam-Filled
Power		
Drive × Steer	4 WD×2 WS	4 WD×2 WS
Engine (Brand/Model/Power/Emissions)	Yanmar 4TNV88C-DFLT 35.5 kW (EPA Tier 4/EU Stage 5) Yanmar 4TNV88-ZCDCS12 35.3 kW (China 4) Kubota D1105-E4B-EU-X1 18.2KW Kubota V2403-CR-TIE4B-SPB-1 39.6KW (EPA Tier 4) Kubota V2403BM-DI-CT04 36.5KW (China 4) DEUTZ D2011L03I 36.3KW (EU Stage 3)	
Hydraulic Tank Capacity	107 L (23.5 gal (UK)/28 gal (US))	107 L (23.5 gal (UK)/28 gal (US))
Fuel Tank Capacity	110 L (24 gal (UK)/29 gal (US))	110 L (24 gal (UK)/29 gal (US))
Weight		
Weight	7,380 kg/7,170 kg (16,270 lbs/15,807 lbs)	8,210 kg/8,000 kg (18,100 lbs/17,637 lbs)
Standards Compliance	CE/ANSI/CSA/AS/EAC	

